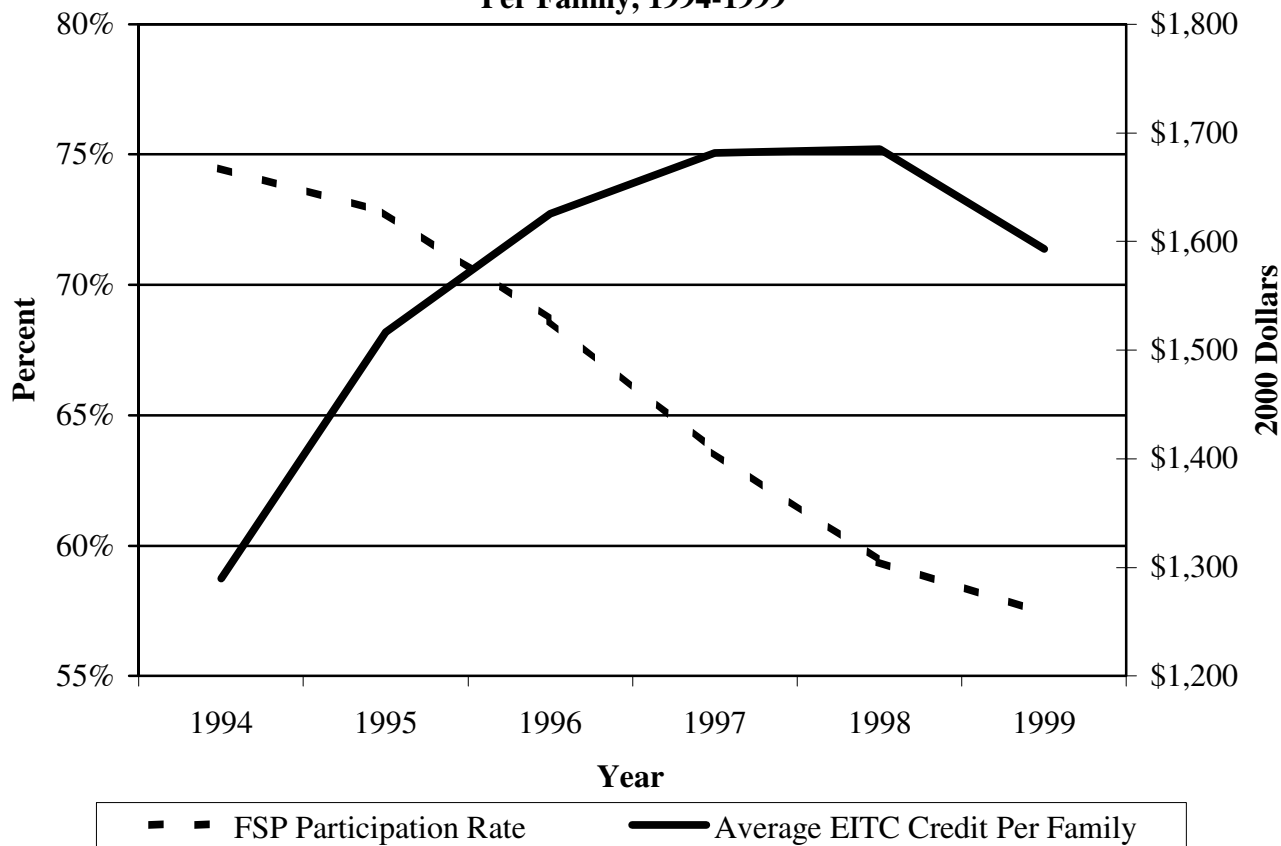


**Figure 1: Overall FSP Participation Rate<sup>1</sup> and Average EITC Credit Per Family, 1994-1999**



<sup>1</sup> FSP participation rate is defined as the percentage of eligibles participating in the FSP.

Sources: FSP participation rates from FSP Program Operations data, FSP Quality Control data, and March CPS data as shown in Rosso (2001); Average EITC Credit Per Family, 2000 Green Book, U.S. GPO.

**Figure 2: Earned Income Tax Credit (FY1999) and Food Stamp Program Benefits (PY2001) for Households with One Adult Earner, by Size of Family, Number of Children**

